

RHEUMATOLOGY OPEN ONLINE CURRICULUM

**FOR RHEUMATOLOGY AND DERMATOLOGY
HEALTHCARE PROVIDERS:**

**A UNIQUE INITIATIVE TO IMPROVE OUTCOMES FOR PATIENTS WITH
INFLAMMATORY RHEUMATIC DISEASES AT RISK FOR COVID-19**

CME/CE-ACCREDITED ENDURING MATERIAL

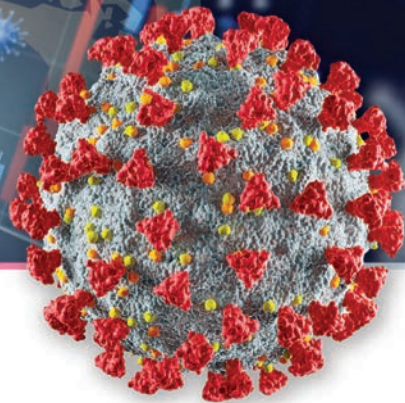


AVAILABLE THROUGH DECEMBER 2022

REGISTRATION IS COMPLIMENTARY



<https://upenn.cloud-cme.com/ROOCCovid19>



COURSE DESCRIPTION & TARGET AUDIENCE

The *Open Online Curriculum on COVID-19 for Rheumatologists and Dermatologists* is a unique educational initiative designed to facilitate learning on how to overcome the challenges of providing optimal healthcare for patients with autoimmune and systemic inflammatory diseases during the pandemic. This program is part of the new Penn Rheumatology Open Online Curriculum (Penn ROOC) that will offer expert educational content about rheumatology and related fields in innovative and highly accessible ways. The target audiences for this curriculum are rheumatology and dermatology providers at all levels, as well as students.

LEARNING OBJECTIVES

The participants in this educational curriculum, should be able to:

- Identify the clinical presentations of COVID-19 that resemble underlying rheumatic and dermatologic diseases in adults, adolescents, and children
- Translate a *basic* understanding of COVID-19 and its relationship to chronic inflammatory immune processes into optimal clinical practice
- Recognize factors that pose an increased risk for patients with inflammatory autoimmune disease to contract COVID-19 and to develop severe, life-threatening complications
- Provide participants with guidelines on when to treat and when to refer their patients with COVID-19 to appropriate levels of care
- Ascertain which immunomodulatory drugs they should continue or discontinue if patients have symptomatic COVID-19, are known asymptomatic carriers, or have been exposed
- Provide participants with a comprehensive, updated understanding of the treatment landscape in inflammatory autoimmune diseases
- Be prepared to consult with critical care providers about optimal immunomodulatory drugs to consider in the management of patients with moderate to severe COVID-19
- Become familiar with COVID-19 Guidelines as set forth by the American College of Rheumatology and the American Academy Dermatology Association
- Be aware of the unfolding efficacy and safety recommendations of the CDC and FDA regarding suitable use of COVID-19 vaccinations of patients on immunomodulatory therapy
- Employ interventions for people experiencing psychologic disturbances during the COVID-19 pandemic
- Institute non-pharmacologic interventions to foster optimal rehabilitation for patients suffering from COVID-19 and autoimmune inflammatory diseases
- Inform participants about educating their patients on how to stay safe from COVID-19 and its complications along with guidelines for returning to normalcy

HOSTING DEPARTMENT

Open Online Curriculum on COVID-19 for Rheumatologists and Dermatologists is hosted by the Department of Medicine, Division of Rheumatology at the University of Pennsylvania.



ACCREDITATION



JOINTLY ACCREDITED PROVIDER™
INTERPROFESSIONAL CONTINUING EDUCATION

In support of improving patient care, Penn Medicine is jointly accredited by the Accreditation Council for Continuing Medical Education (ACCME), the Accreditation Council for Pharmacy Education (ACPE), and the American Nurses Credentialing Center (ANCC), to provide continuing education for the healthcare team.

DESIGNATION OF CREDIT PER MODULE 1-8

Physicians: Penn Medicine designates each enduring material for the number of *AMA PRA Category 1 Credits™* listed below. Physicians should claim only the credit commensurate with the extent of their participation in the activity.

MODULE	CREDIT AMOUNT
Module 1	.5 <i>AMA PRA Category 1 Credits™</i>
Module 2	.75 <i>AMA PRA Category 1 Credits™</i>
Module 3	1.0 <i>AMA PRA Category 1 Credits™</i>
Module 4	.75 <i>AMA PRA Category 1 Credits™</i>
Module 5	.5 <i>AMA PRA Category 1 Credits™</i>
Module 6	1.0 <i>AMA PRA Category 1 Credits™</i>
Module 7	.5 <i>AMA PRA Category 1 Credits™</i>
Module 8	TBD <i>AMA PRA Category 1 Credits™</i>



ABIM MOC: Successful completion of this CME activity, which includes

participation in the evaluation component, enables the participant to earn MOC points in the American Board of Internal Medicine's (ABIM) Maintenance of Certification (MOC) program. Participants will earn MOC points equivalent to the amount of CME credits claimed for the activity. It is the CME activity provider's responsibility to submit participant completion information to ACCME for the purpose of granting ABIM MOC credit.

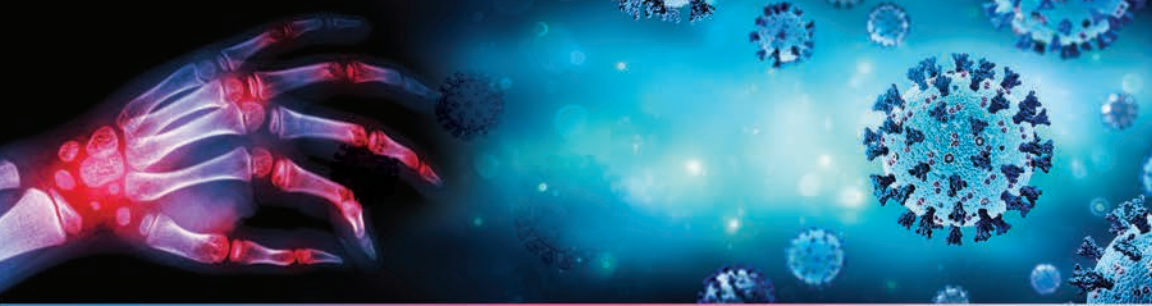
MODULE	CREDIT AMOUNT
Module 1	.5 MOC Points
Module 2	.75 MOC Points
Module 3	1.0 MOC Points
Module 4	.75 MOC Points
Module 5	.5 MOC Points
Module 6	1.0 MOC Points
Module 7	.5 MOC Points
Module 8	TBD MOC Points

Nurses:

MODULE	CREDIT AMOUNT
Module 1	Provides up to .5 contact hours
Module 2	Provides up to .75 contact hours
Module 3	Provides up to 1.0 contact hours
Module 4	Provides up to .75 contact hours
Module 5	Provides up to .5 contact hours
Module 6	Provides up to 1.0 contact hours
Module 7	Provides up to .5 contact hours
Module 8	TBD MOC Points

Physician Assistants: AAPA accepts certificates of participation for educational activities certified for *AMA PRA Category 1 Credit™* from organizations accredited by ACCME or a recognized state medical society. PAs may receive Category 1 credits for completing this activity.

MODULE	CREDIT AMOUNT
Module 1	.5 <i>Category 1 Credits</i>
Module 2	.75 <i>Category 1 Credits</i>
Module 3	1.0 <i>Category 1 Credits</i>
Module 4	.75 <i>Category 1 Credits</i>
Module 5	.5 <i>Category 1 Credits</i>
Module 6	1.0 <i>Category 1 Credits</i>
Module 7	.5 <i>Category 1 Credits</i>
Module 8	TBD <i>Category 1 Credits</i>



CERTIFICATES AND TRANSCRIPTS:

After the conference has concluded, all participants will receive a follow-up email with instructions and a link. Once participants submit the request for credit, the earned credits will be available for viewing on your transcript or available for printing at <https://upenn.cloud-cme.com>. Please note that the individual certificate will not be mailed.

REGISTRATION FEES

There is no fee to register for the modules, however pre-registration is required in order to access the content and complete the certification requirements. You must register for each module separately online at <https://upenn.cloud-cme.com/ROOCCovid19>

Please Note: If you do not already have a UPenn Cloud CME profile, you will need to create one by visiting: <https://upenn.cloud-cme.com> and clicking 'Sign-in' and sign-in using your email address and then selecting the "Don't have an account?" option. Please be sure you do not already have an existing UPenn Cloud CME account before creating a new profile. All Penn Medicine employees, faculty and staff must sign-in using your UPenn ID.

DISCLOSURES

Penn Medicine, Office of Continuing Medical and Interprofessional Education, adheres to the *ACCME Standards for Commercial Support*. Faculty and planners' disclosure information will be made available in the conference materials and syllabus. Faculty members are also expected to disclose to participants any discussions of off-label and/or investigational uses of pharmaceutical products within their presentations.

CANCELLATION POLICY

The University reserves the right to cancel or postpone any course due to unforeseen circumstances.

NONDISCRIMINATION STATEMENT The University of Pennsylvania values diversity and seeks talented students, faculty, and staff from diverse backgrounds. The University of Pennsylvania does not discriminate on the basis of race, sex, sexual orientation, gender identity, religion, color, national or ethnic origin, age, disability, or status as a Vietnam Era Veteran or disabled veteran in the administration of educational policies, programs or activities; admissions policies; scholarship and loan awards; athletic, or other University administered programs or employment. Questions or complaints regarding this policy should be directed to Executive Director, Office of Affirmative Action and Equal Opportunity Programs, 3600 Chestnut Street, Sansom Place East Suite 228, Philadelphia, PA 19104-6106 or 215-898-6993 (Voice) or 215-898-7803 (TDD). www.upenn.edu/affirm-action.



FACULTY

The following course directors and speakers listed in this section are all faculty of the Perelman School of Medicine at the University of Pennsylvania and Penn Medicine, Philadelphia, PA

CURRICULUM DIRECTOR

Warren A. Katz, MD

Adjunct Professor of Medicine
Former Chair of Medicine and
Chief of Rheumatology
Penn-Presbyterian Medical Center

ASSOCIATE CURRICULUM DIRECTORS

Peter A. Merkel, MD, MPH

Professor of Medicine
Professor of Epidemiology in Biostatistics and Epidemiology
Chief, Division of Rheumatology

Alexis R. Ogdie-Beatty, MD

Associate Professor of Medicine
Associate Professor of Epidemiology in
Biostatistics and Epidemiology

SPEAKERS

Naomi A. Amudala, CRNP, MSN*

Nurse Practitioner, Rheumatology

Sokratis Apostolidis, MD

Rheumatology fellow – 3rd year, PGY6

Joshua F. Baker, MD, MSCE

Assistant Professor of Medicine
Assistant Professor of Epidemiology in
Biostatistics and Epidemiology

Edward Behrens, MD

Assistant Professor of Pediatrics
Chief, Division of Rheumatology
Joseph Lee Hollander Chair of Pediatrics
Children's Hospital of Philadelphia

Joyce Chang, MD, MSCE

Assistant Professor of Pediatrics
Children's Hospital of Philadelphia

Michael George, MD, MSCE

Assistant Professor of Medicine
Assistant Professor of Epidemiology in Biostatistics
and Epidemiology

Sharon L. Kolasinski, MD

Professor of Clinical Medicine

Terri M. Laufer, MD

Associate Professor of Medicine

Christine T. McAndrew, PA-C**

Orthopaedic Surgery

Robert G. Micheletti, MD

Assistant Professor of Dermatology
Assistant Professor of Medicine
Director of Hospital Dermatology

Misha Rosenbach, MD

Associate Professor of Dermatology
Associate Professor of Medicine
Vice Chair Dermatology Education

Sara D. Wasserman, MD

Assistant Professor of Clinical Medicine

*Nurse Planner

**Physician Assistant Planner

PARTICIPATE IN A LIVE Q&A SESSION WITH THE FACULTY!

Those who have completed the module(s) will be contacted with information to join a live, virtual Q&A session with the faculty of the module(s) completed. The Live Q&A session is optional.



MODULE 1

Impact of COVID-19 on Patients with Rheumatologic or Systemic Dermatologic Diseases

- Overview of the COVID-19 pandemic
- Epidemiology of the COVID-19 pandemic
- Susceptibility to COVID-19 among patients with rheumatic or systemic dermatologic diseases
- Clinical outcomes of COVID-19 among patients with rheumatic or systemic dermatologic diseases

COURSE PRESENTER: Joshua F. Baker, MD, MSCE

COURSE MODERATOR: Alexis Ogdie, MD, MSCE

MODULE 2

Immunology and Pathophysiology of COVID-19

- Update on the biology and immunology of SARS-CoV-2 infection
- Pathophysiology of the COVID-19 disease state
- Variability of response to SARS-CoV-2 infection
- Pharmacology of rheumatic drugs for COVID-19

COURSE PRESENTER: Sokratis Apostolidis, MD

COURSE MODERATOR: Terri Laufer, MD

MODULE 3

Management of Rheumatic Diseases during the COVID-19 Pandemic: Key General Concepts

- Use of immunomodulatory medications during the COVID-19 pandemic:
 - Glucocorticoids
 - Traditional disease-modifying anti-rheumatic drugs (DMARDs)
 - Biologics and JAK inhibitors
- "American College Rheumatology Clinical Guidance for Care of Adult Patients with Rheumatic Diseases during the COVID-19 Pandemic"
- Implications of immunomodulatory therapy on COVID-19 vaccinations

COURSE PRESENTER: Michael George, MD, MSCE

COURSE MODERATOR: Alexis Ogdie, MD, MSCE



MODULE 4

Dermatologic Issues with COVID-19

- Cutaneous manifestations of COVID-19
- Role of dermatologists in diagnosis & treatment of complications of COVID-19
- Problems in systemic dermatologic disease during the COVID-19 pandemic
- Management of systemic dermatologic disease during the COVID-19 pandemic
- "American Academy Dermatology Clinical Guidance for COVID-19"

COURSE PRESENTER: Robert G. Micheletti, MD

COURSE MODERATOR: Misha Rosenbach, MD

MODULE 5

The Spectrum of COVID-19 in Children and Adolescents

- Overview and epidemiology of the COVID-19 pandemic in children and adolescents
- The immunology of SARS-CoV2 infection in children and adolescents
- Overlapping clinical features of COVID-19 and pediatric rheumatic diseases
- Multiple organ dysfunction syndrome/cytokine storm syndrome in children and adolescents with COVID-19
- "ACR COVID-19 Clinical Guidance for Pediatric Patients with Rheumatic Disease"

COURSE PRESENTER: Edward M. Behrens, MD

COURSE MODERATOR: Joyce Chang, MD, MSCE

MODULE 6

Non-pharmacologic Management of Rheumatic Diseases during the COVID-19 Pandemic

- Addressing psychologic issues with patients and family
- Physical therapy
- Exercise, lifestyle, and sleep
- Team approach

COURSE PRESENTER: Warren A. Katz, MD

COURSE MODERATOR: Sara D. Wasserman, MD



MODULE 7

Educating Patients & Their Caregivers During the COVID-19 Pandemic

- Educating patients about the risks of COVID and how to reduce it
- Advice on getting their lives back to “normal” during the COVID-19 pandemic
- Telemedicine: tips and techniques to patients for maximizing their experience
- What to tell patients about vaccines and testing

COURSE PRESENTERS: Naomi A. Amudala, CRN, MSN; Christine T. McAndrews, PA-C

COURSE MODERATOR: Sharon Kolasinski, MD

MODULE 8

Management of Specific Conditions – Case Studies

- Management of rheumatoid arthritis, psoriatic arthritis, and other inflammatory arthritides during the COVID-19 pandemic
- Management of systemic lupus erythematosus, systemic sclerosis, vasculitis, and other systemic inflammatory autoimmune diseases during the COVID-19 pandemic
- Differentiating manifestations of rheumatic diseases from those of COVID-19

COURSE PRESENTERS: Alexis Ogdie, MD, MSCE; Peter A. Merkel, MD, MPH

COURSE MODERATOR: Warren A. Katz, MD